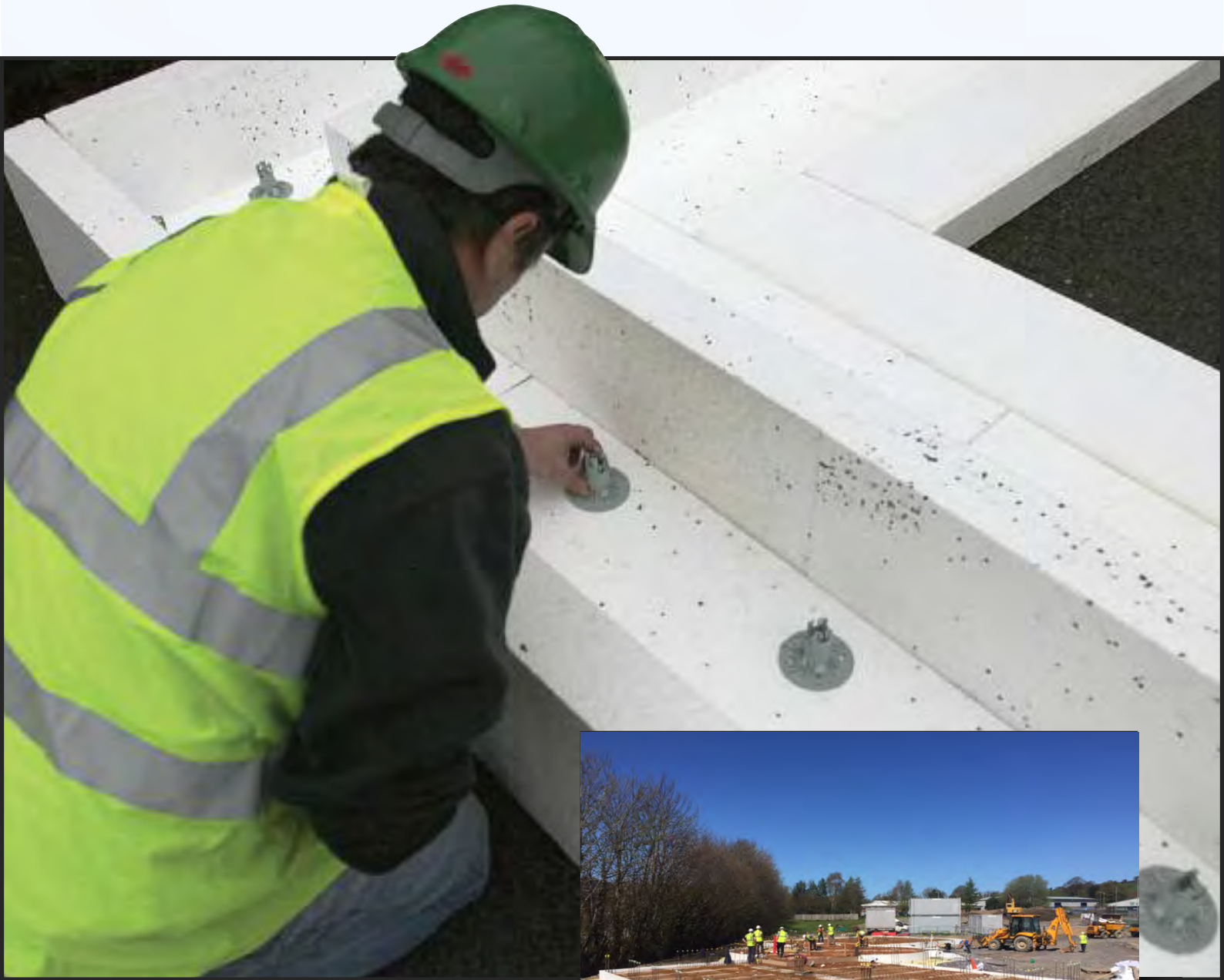


# Evolved SmartWall Future Foundation system





# Evolved SmartWall Future Foundation system offer an economical and efficient way to provide an insulated foundations and floors in one product



**STEP 1:** Clear the topsoil, take levels and lay compacted hardcore 150mm deep. Radium sump and pipework are laid at this stage.



**STEP 2:** Place corners in position and set level.



**STEP 3:** Continue placement of ring beam profiles. Trim profiles as necessary to achieve a tight fit.



**STEP 4:** Place three layers of floor insulation sheets over the remaining foundation. Overlap sheets to achieve continuity of insulation. Secure with pins provided.



**STEP 5:** Install steel through the ring beam profiles and place steel mesh reinforcement according to our structural engineer's design. (Supplied).



**STEP 6:** Insulated foundation system is now complete and ready to take 100mm concrete.

- Suitable for all ground conditions.
- Suitable for all building types (ie brick /block, timber-frame etc)
- Lowest U-values.
- Eliminates wall floor cold bridge.
- System will not diminish over time and is unaffected by water.
- Passive slab approved.

**Send us your architectural plans and we will give you a detailed quotation, outlining how our system will save you money, by using less materials, labour and time!**



**Evolved Supplies Ltd**  
**4 Firs Close. St Martins. SY11 3LT**  
**Tel: 01691 707 100**  
**email: mail@evolvedsupplies.co.uk**  
**www.evolvedsupplies.co.uk**

