

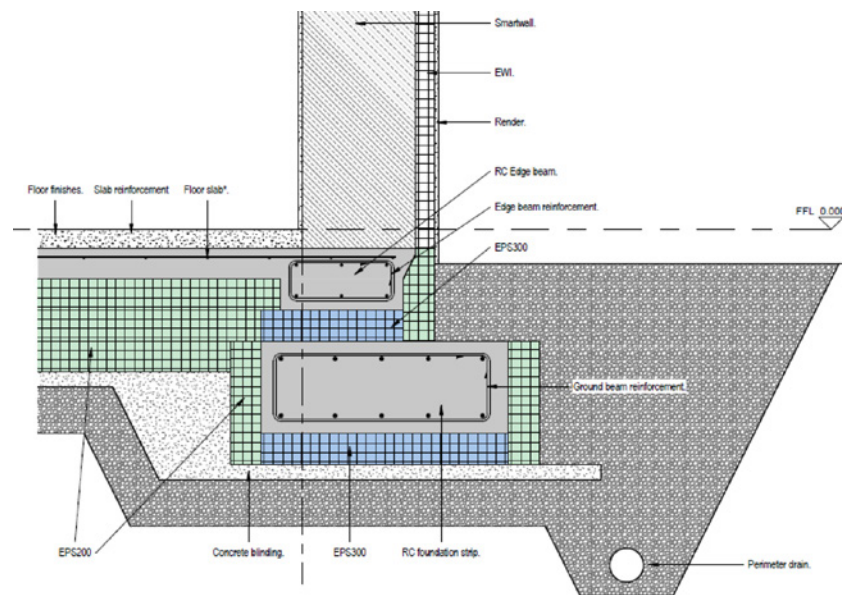
JUWÖ Evolved SmartWall™ Standard and Screw Piled Monobeam Systems

The Evolved SmartWall Monobeam insulated structural foundation floor slab system has been developed to provide an energy efficient way of providing an insulated foundation giving you 0.10 W/m²K U Value specifically for the Evolved SmartWall™ Monolithic Clay block system.

The Evolved SmartWall Monobeam insulated structural foundation floor slab system comes in two formats

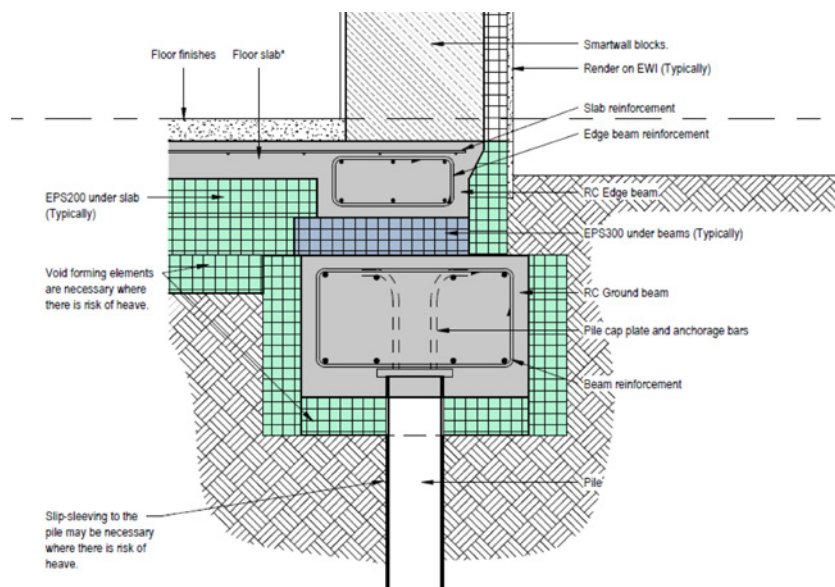
- **SmartWall Standard Monobeam system** - Where an integral reinforced concrete edge beam supports the SmartWall external and load bearing partitions or internal walls. Typically, the foundation loads are spread into the sub-soil through a lower reinforced concrete foundation beam. Where the loads are heavy, small concrete stubs bridge the gap between the upper beams and foundation strips.

Essential elements of the **Standard Monobeam system**:



- **SmartWall Screw Piled Monobeam system** - Where an integral reinforced concrete edge beam supports the SmartWall external and load bearing partitions or internal walls. Typically, the foundation loads are spread into the sub-soil through a lower reinforced concrete foundation beam. Where the loads are heavy, small concrete stubs bridge the gap between the upper beams and foundation strips.

Essential elements of the **Standard Monobeam system**:



JUWÖ Evolved SmartWall™ Standard and Screw Piled Monobeam Systems

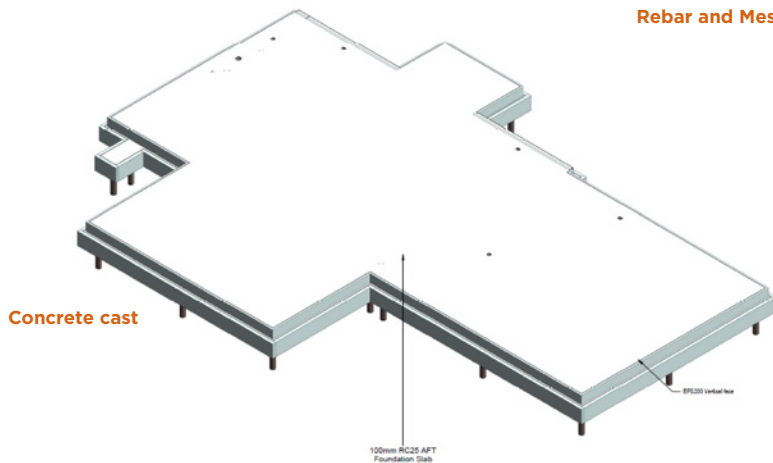
In both cases, piled or not, a shallow system has major consequent savings in excavation and cost and environmental impact of disposal of waste soil from site.

Where the SmartWall Screw Piled Monobeam system is used, there is almost no waste soil displaced in the piling operation and no requirement for piling mats, which would otherwise increase the installation cost even more.

The SmartWall Standard and Screw Piled Monobeam systems are made up of lower and upper connected beams. The lower beam supports the upper beam where the SmartWall Block monolithic leaf sits. This enables separation from a thermal transmittance standpoint, whilst ensuring that both beams are connected to the raft foundation, so a structurally sound foundation is produced.



Rebar and Mesh Placed



Concrete cast

SmartWall Blocks placed on a DPC to complete the seal

